

A Tale of an Orphan City

Waqas Wajid

Landscape Architecture Student in Anhalt university of Applied Sciences, Germany

Abstract: Urbanisation is a challenged faced all over the world as the cities have this charismatic economical horizons to attract people from all over the world, Karachi is one of among them it has a population of 25 million people with a density of 6000 people per Sqm. In article I tried to explain the ethnical composition of the city as well trembling infrastructure of the city. As well the vast various communities lives without any cooperation, Religious, Ethnical and linguistic divide exist there political tug of war is merely for holding it economical bloodline so keeping the increasing population of the city and the land in analysis I tried to visualise the future scenarios in three phases as I have the data of population in 2005, from that particular data I projected current situation of 2016 and predicted the future in 2050. As the population is inconsistent it can be increased or decreased but the land is fixed. Keeping this phenomena in my analysis I used ArcGIS software to visualise the previous, current and future situation.

Keywords: charismatic economical, Tale of an Orphan City.

Urbanisation is the biggest challenge of this 21st century according to UN source by 2050 almost 70 percent of world population will be in cities, So as a Karachite I am from the 7th largest city according to Population in the world. As mentioned on Wikipedia, Population of Karachi in 2015 would be around 24 million with density of 6000 people per square meter. Considering an unofficial source is more reliable then the census which have been done in 1998 by the state. However if the state dare to have an official census for Karachi it will reflect their chaotic management of the affairs, Collapsing infrastructure, infected health care system, jeopardize monitoring system, trembling societies leading to ghettos; all this matters are broiling above the hood.

The ethnical composition of Karachi is so diverse it consist the majority of Urdu speakers (migrated from India in 1947) following Pushtun, Punjabi, Sindhi, Balochi, Saraiki ,Hazara and gilgit mostly from all over the Pakistan. Moreover Karachi accommodated Afghan refugees during 1980 Afghan war, Bengalis, Nepalese, Sirilankans and Chinese are also the thread of this ethnical fabric. Further on the religious ground the majority is Sunni Muslim followed by Shias, Ahmedis, Hindus, Christian and Zoroastrian (N.F. Paracha 2011). When any city have such a diverse composition of societies needs a little more effort to be managed it easier to do well among alike but an extraordinary effort required among numerous. Unfortunately A city which accommodates approx. 24 million people is without any mass transportation network, without any BRT or LRT common people suffers the humiliation in Public transport which are owned by private association and people who owned their vehicles mostly stuck in Traffic Jams. On the other hand radical development in Transportation is ready to take place in the modern cities. Buildings are constructing without any ethical conduct, building codes are another story; owning a land in metropolitan for the middle class is mere a dream but people poll money buy single story house demolished it and construct four story building and then sell it to people. However it's fulfilling the demand of urbanisation but the supply which is the planning of the city is on the verge of collapse the more demand needs more supply of education, electric, water, sewerage healthcare and transportation but without any proper urban planning it's a gruesome existence. Imagine a patient with a cardiac arrest awaiting for the paramedics and they were stuck in a jam they would not able to respond on time not because the incident occurred in remote area but in an urban Jungle. If one wants to describe how vigilant the law enforcement agencies are then they are nothing more than sleeping ugly. A common citizen is a victim by both the law enforcement as well as from culprits. All these chaotic handling of the affair making the city more fragile. The societies which were living in harmony are more afraid from each other and turn violent against each other and want to dominate over one and other so the minorities which were living now they are living closer to themselves the towns are turned into Ghettos where person from different ethnical background feels like an alien. The foremost, city has no database from which they could rectify how many

person are living in that particular district or town. There is no one who wants to own the problems of the city but want to get equal share from the wealth of the city.

On the whole, urban agglomeration is concern of all growing cities, developed countries are equipping their cities with new ideas in sociological and technological aspects, Karachi is one of the mega cities of the world but this orphan city is neglected by the state in all developing affairs as well as in integration of societies, is this city is ready to undergo climate changes as in last year 2015 it caused 2000 lives whereas in COP21 world vows maintain the global warming below 2°C and our Prime minster among his entourage attended the conference, Is there in past any initiatives has been made towards “Think globally act locally” from agenda 21. World Bank or other monetary institutions will definitely help us but due to short sighted vested interest of Politian and state depriving the relief from masses. However they have all the state department of relief, planning and what not but theses department are mere dummies headed by incompetents. I as a Karachiites knows how much potential, enthusiasm, courage and generous this city is. All it requires to adopt this orphan city by its own inhabitants.

Following are the visualisation of the Karachi’s districts according to its population. From the reference year 2005 fig 1.1, I projected the current densification of the district in 2016 in fig 1.2 and from same reference year I projected the densification in future from same population growth rate in 2050 in fig 1.3. These visualisations are the result of work which I first initiated on arc map through digitising the districts from reference boundaries available on Karachi’s Municipality website. The formula which I used are the following.

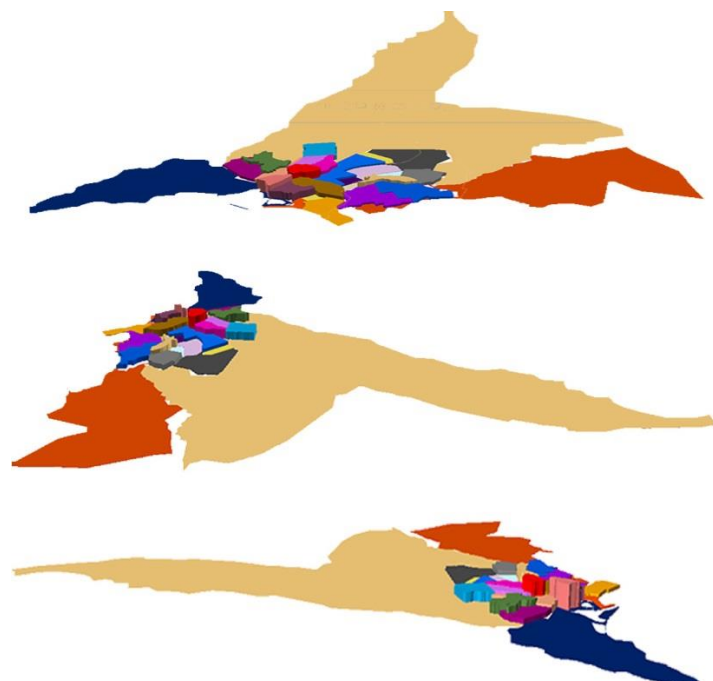
[Population] / Area (for 2005 fig1.1)

[Population] *(11*0.05)+ [Population] / Area (for 2016 fig1.2)

[Population] *(45*0.05)+ [Population] / Area (for 2050 fig1.3)

REFERENCES

- [1] https://en.wikipedia.org/wiki/Demographics_of_Karachi
- [2] <http://tribune.com.pk/story/658394/the-population-of-karachi-has-doubled-in-15-years/>
- [3] <http://worldpopulationreview.com/world-cities/karachi-population/>
- [4] <http://www.dawn.com/news/1134284>



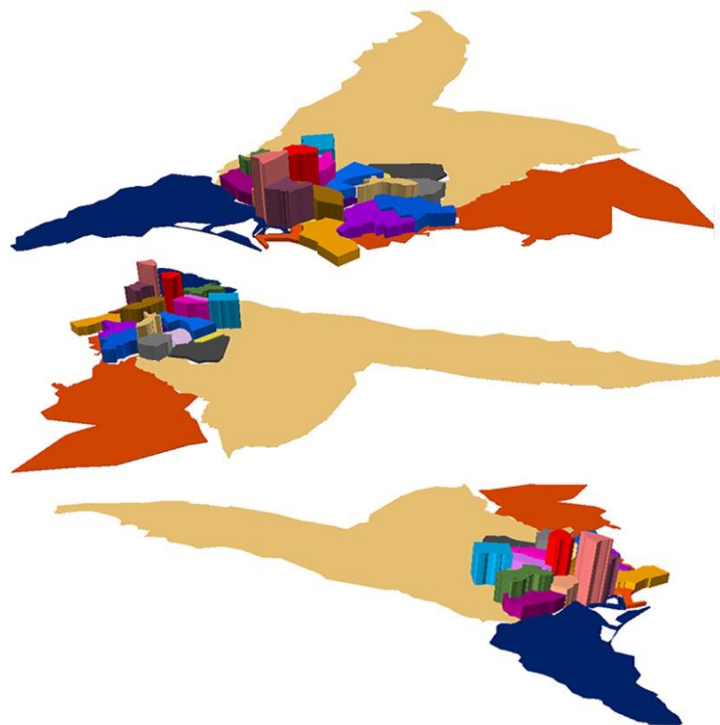
Population density of karachi respective to Areas in year 2005

fig 1.1



Population density of karachi respective to Areas in year 2016

fig1.2



Population density of karachi respective to Areas in year 2050

fig1.3